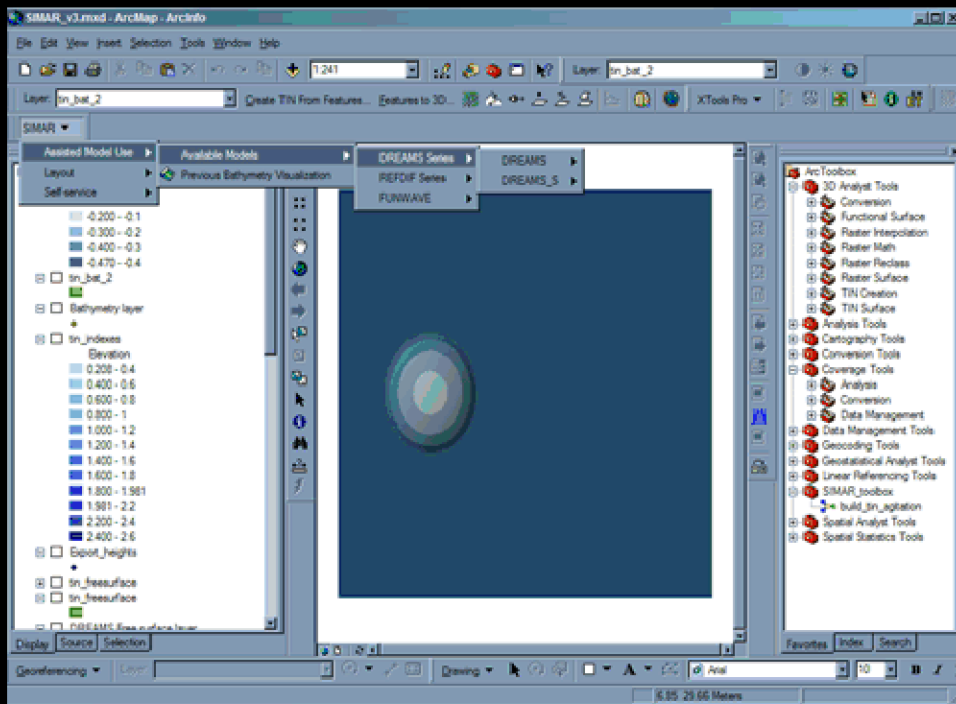
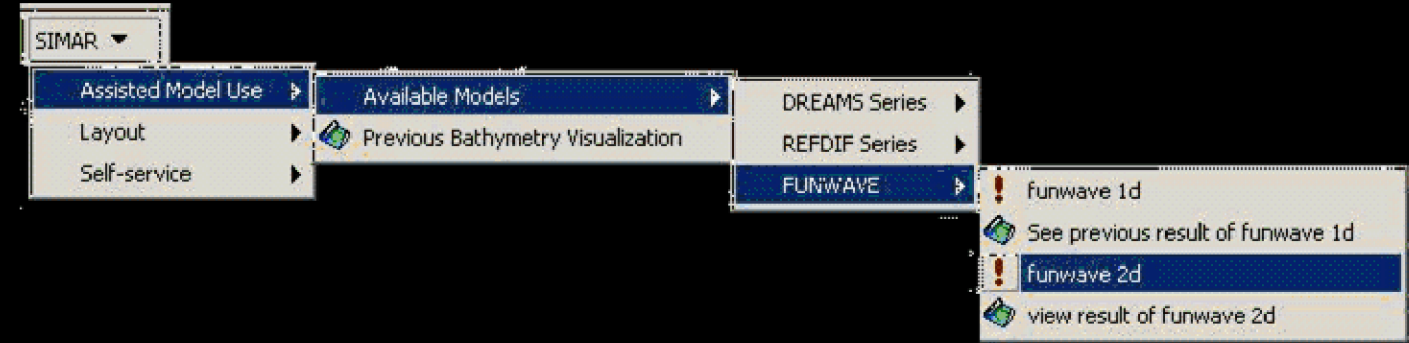


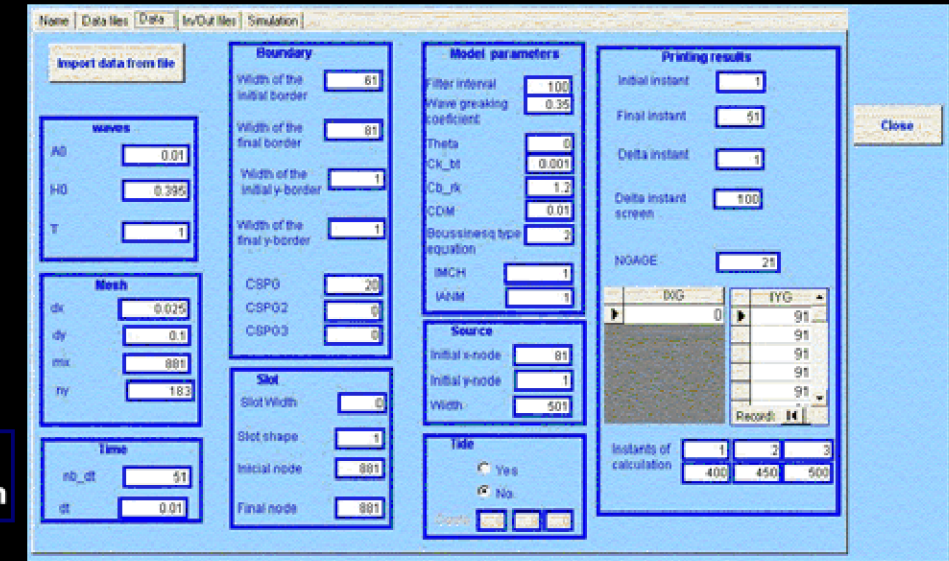
GIS TOOL FOR COASTAL ENGINEERING



The knowledge of the sea-wave characteristics is of paramount importance in the design of port and coastal protection works, in the evaluation of the navigation conditions at the entrance channels and inside the harbours, and in the study of the morphodynamics of coastal regions



The SIMAR tool is presented as a GUI that integrates several numerical models and enables the lay user to follow a clearly defined path to assemble a sea-wave characterization project for a given region



REFDIF application

DREAMS application

FUNWAVE application



For each case study, the selection of the most appropriated numerical model (or models) depends on the objective of the study, the main phenomena involved and the limitations of each model

