

Protected Areas and Natura 2000 Sites in the Bologna Province

Contacts:

Servizio di Pianificazione Paesistica
Settore Ambiente
Provincia di Bologna
Strada Maggiore 80
40100 Bologna (Italia)
pampa@provincia.bologna.it

Razionale:

Various levels of planning and management are present at local level (Ente Provincia), where a local actor has to produce and manage geo-information complementary with other scale of geo-information. That implies a continuous exchange of data and information (maps or other geo-related information) that from the producer who has originated it must be delivered to other bodies both as reference for other information to be produced and for check and validation/approval of plans. The flow of geo-information is then bi-directional.

Through the Bologna Province 6 Regional Parks, 2 Regional Reserves, 2 Provincial Parks, 13 Ecological Restoration Areas, 21 SIC, and 10 ZPS exist.

Those areas represent several kind of Landscapes: high mountains (Corno alle Scale, 1945 m) and High-Appenins lakes (Suviana, 144 ha, Brasiamone, 54 ha); karstic hills, their surfacing limestones and underground caves (eg: grotta della Spipola); plain's wetlands attends of many birds species (heron, stork, *spatola*, *tarabuso*, *falco di palude*, *cavaliere d'Italia*, ecc...).

The landscape is also characterised by its historical and cultural aspects, as the Monte Sole's Memorial for Second World War Soldiers and the Monteveglio middle-age Abbey.

In this framework, the use case refers mainly to the production of geo-databases and cartography for the Plan of the Park and for the several running projects that require use of geo-information, like mapping for hiking and *grand-randonnée* routes.

Aims:

As overall the perspective is to embed the geo-information managed by Provincia in a seamless flow that gathers various information from all available sources and exploits it for planning, management and promotion.

More specifically the pursued aims are:

- Management (use of geo-information by planners and officers)
- Promotion (access to geo-information by citizens)

Addressed users:

Professional users (officers) of the of the different levels, mutually exchanging information

Final users (citizens, tourists) looking for browsing tourism information

Geographic Area:

Italy, region of Emilia Romagna, province of Bologna

BoundingBox minLON="10.8024" minLAT="44.0442" maxLON="11.8613" maxLAT="44.8136"

Data, Feature Types and web services:

Zone sic

Zone zps

Protected Area

ecological restauration Areas

Municipality

Road

Hillshade

CTR 100000

CTR 25000

CTR 5000

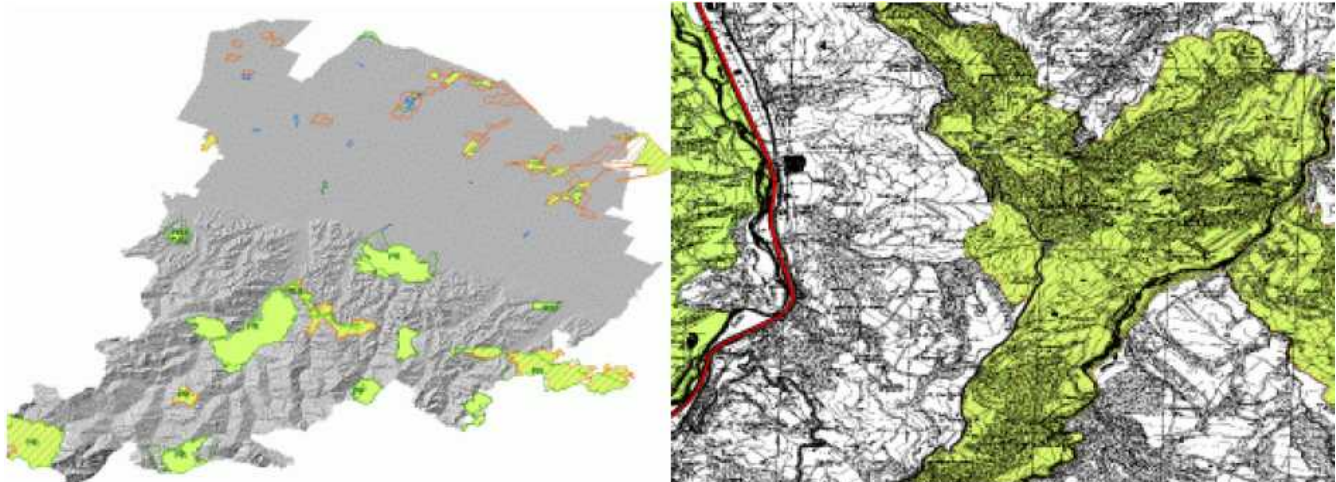
<Involved data sets and feature types>

Architecture:

UMN MapServer, Esri ArcSDE, Oracle

<A sketch with the architecture: the different elements of the Nature-GIS SDI that are involved>

Screenshots:



<Some screenshots of the web application and/or the data>

Functions:

The previewed functions by our use case allow to view the cartography through a thematic choice to demand and produce layout of necessary press.

<The GIS functions used in the scenario with the underlying tasks (link between the need and the function). This can be just viewing functionality, but can go to spatial operations for example>

URLs:

Web services:

<http://cst.provincia.bologna.it:81/cgi-bin/mapserv.exe?map=../htdocs/myMaps/protectedareas.map&>

<http://cst.provincia.bologna.it:81/cgi-bin/mapserv.exe?map=../htdocs/myMaps/base.map&>

<http://cst.provincia.bologna.it:81/cgi-bin/mapserv.exe?map=../htdocs/myMaps/raster.map&>

<provide URL's of the web services here, when publicly available>

Web application:

<provide URL of the web application and/or to a screencam on the web with a demonstration>>

Problems:

<description of the difficulties encountered (and possibly how they where solved) >

Recommendations:

<with the experience you gained in deploying your interoperable web services, provide recommendations to other potential members of the Nature-GIS network>