

Protected Areas of the Czech Republic
<p>Point Of Contact: Pavel Vaniš, VÚGTK (Czech Republic), pavel.vanis@vugtk.cz</p>
<p>Rationale: To provide information on protected areas in the Czech Republic. Namely:</p> <ul style="list-style-type: none"> • National Parks • Protected Landscape Areas • National Natural Reserves • Natural Reserves • National Natural Relics • Natural Relics
<p>Aims: To provide information on localization, extension, type and phenomenon (in future) of the protected areas</p>
<p>Addressed users: Citizens looking for tourist information, local governments</p>
<p>Geographic Area: Whole Czech Republic</p>
<p>Data, Feature Types and web services: 3 shapefiles - WFS:</p> <ul style="list-style-type: none"> - administrative boundaries of the Czech Republic - National Parks and Protected Landscape Areas - “small sized protected areas” <p>Background raster base map 1:500 000 of the CR – WMS (still does not work)</p>
<p>Architecture: The data are accessible through WFS and WMS data service. The original data are ESRI Shapefiles and GeoTIFF raster file. The services run on IONIC RedSpider Web 3.1.</p> <p>The web application consists of panel with layer list, map, tool panel (zoom in, out, pan, move, information, back, coordinates zoom) and legend. There is also possibility to zoom in directly on concrete administrative region in a thumbnail map.</p>

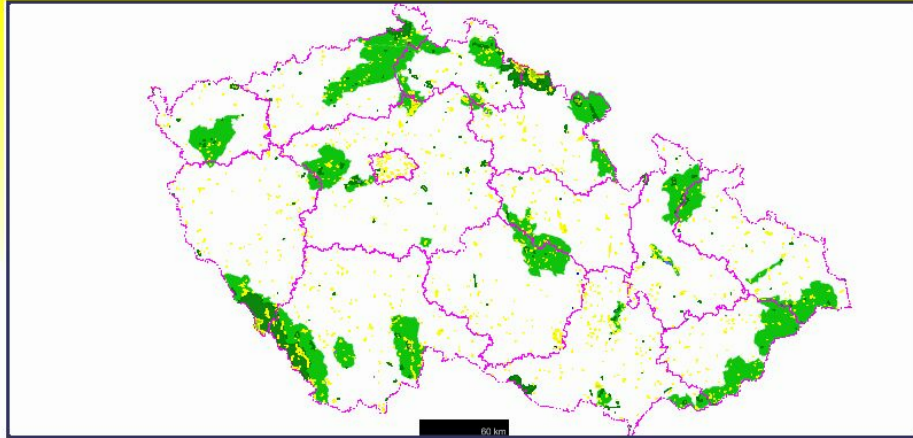
Screenshots:



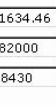
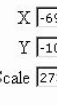
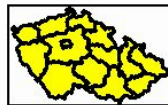
Výzkumný ústav geodetický, topografický a kartografický
Research Institute of Geodesy, Topography and Cartography
tel.: +420 890 351, www.vugtk.cz

Layers

- Map Dressing
 - Grid in Current SRS
 - North Arrow
 - Scale Bar in km
 - Thick Border
- Protected areas in CR
 - Large protected areas
 - Small protected areas
 - Administrative regions
- Raster of the CR



View the map



Map key:

- National Park
- Landscape Protected Area
- National Natural Reserve
- National Natural Relic
- Natural Reserve
- Natural Relic

Functions:

One aspect related to the web mapping functionalities requires to browse the maps:

- Navigation (zoom, pan, scale, etc.)
- Manage Layers, add WMS servers
- Information on the elements

URLs:

Web services:

<http://bivoj.vugtk.cz:8088/nature-gis/wfs>

Web application:

<http://bivoj.vugtk.cz:8088/nature-gis/gaf>

Problems:

- national datum, that was not included in supported datums, was added
- the raster file containing the raster base map of the Czech Republic 1:500 000 could not be displayed at the VUGTK server, all possibilities tried until now without

success. The file might have to be reduced or another server or background map tried.

Recommendations:

The presented VUGTK solution is one of the possible approaches to Nature-GIS presentation on the web. Different approaches should be compared and a decision on standardization taken, e.g. standard map key on the Pan-European Node of Nature-GIS.